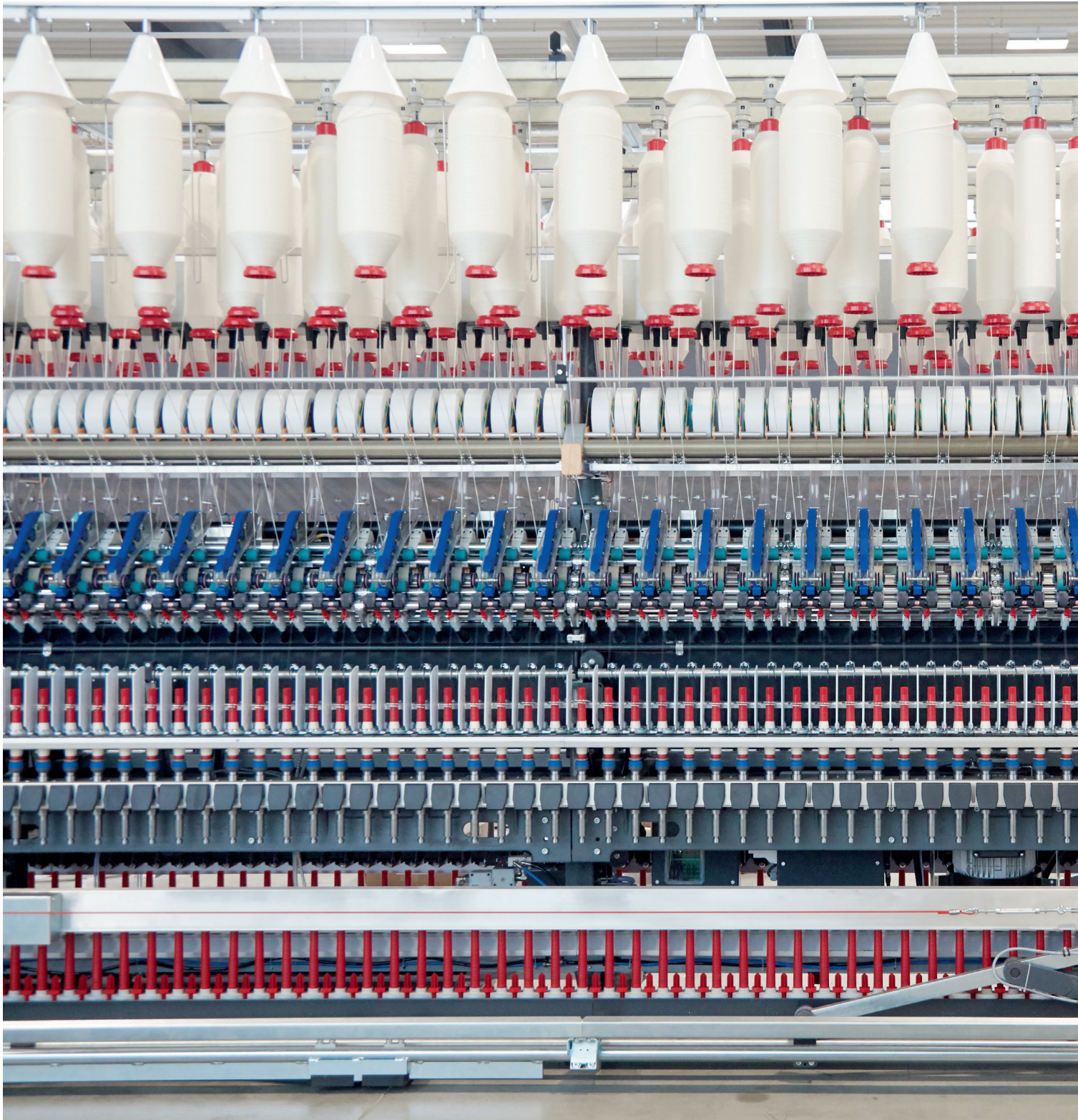


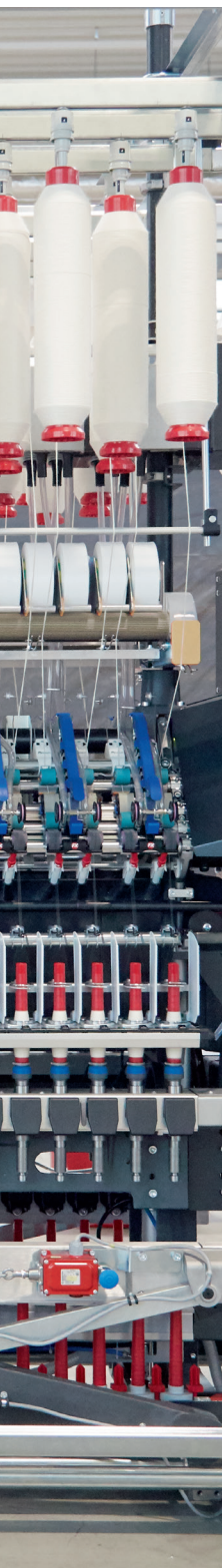
SAURER.



Versatility.

Drafting systems





Texparts offers high quality components for the textile industry. Being a specialist in engineering spinning components, Texparts is a world-class partner for its customers. The product portfolio comprises drafting systems for processing a wide variety of fibres as well as spindles, rings, travellers, bearings and other accessories for spinning.

Drafting systems play an important role in ensuring the quality of yarn in the spinning process. Today, increasing demand is being placed on modern ring-spinning machines with regards to yarn quality and process reliability. With millions of weighting arms installed, Saurer is the leading supplier of drafting systems for all kinds of fibres.

Contents

4
Drafting systems for
short staple ring frames

12
Drafting systems for
roving frames

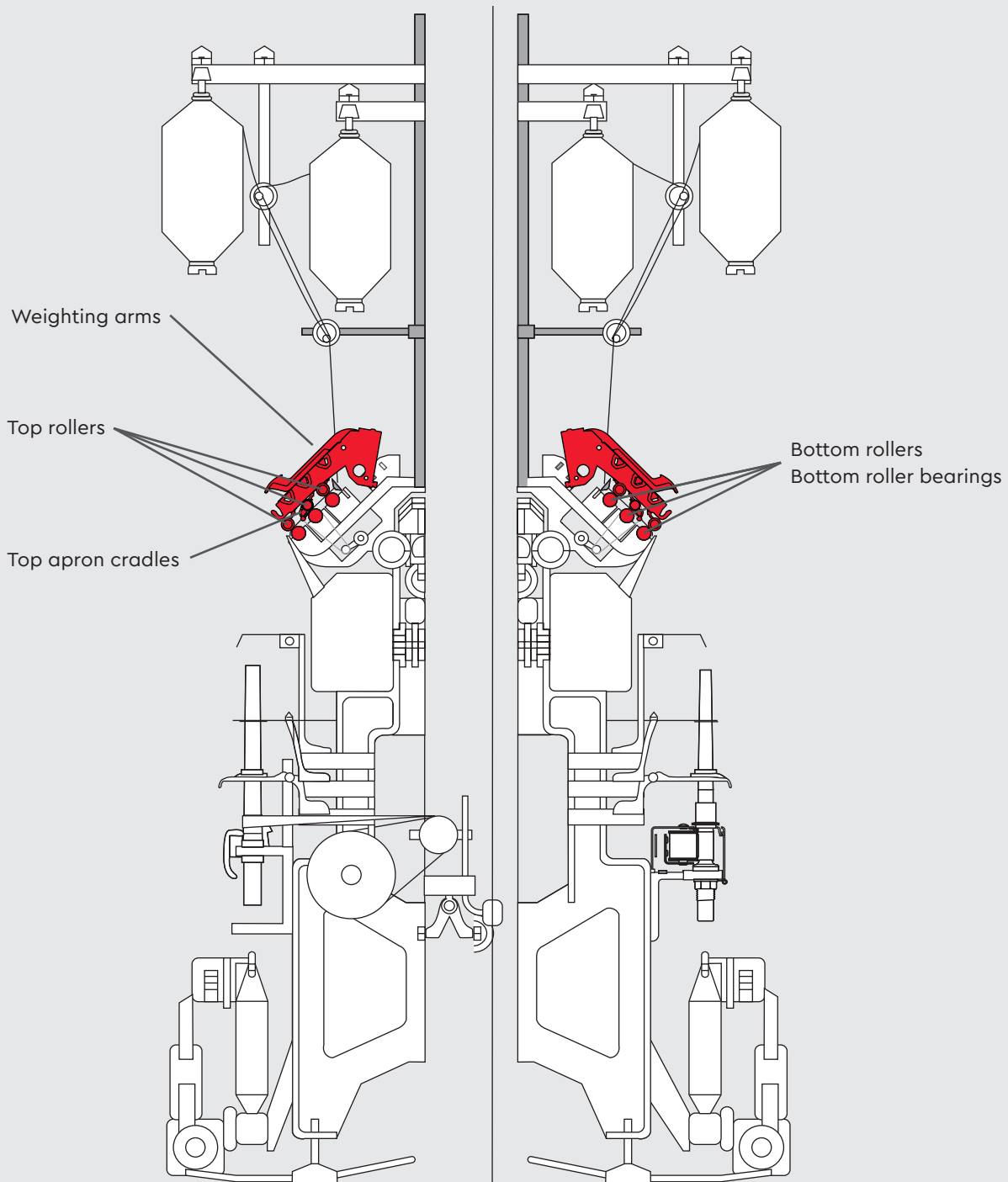
18
Drafting systems for
worsted ring frames

22

Texparts components
for drafting systems

30
Complete drafting systems
overview

Drafting systems for short staple ring frame



es

- **Weighting arms for all machine types**
- **For compact and conventional spinning**
- **Solutions for the conversion of pneumatic drafting systems to mechanical drafting systems**
- **Patented features:**
 - **EasyFit**
 - **EasySet**
 - **EasyHandle**
 - **EasyDraft**
 - **EasyIndicate**
 - **EasyAdapt**



PK 2600 SE series weighting arms

Patented features for increased customer benefits and higher flexibility in application

In today's market spinning mills have to be very flexible in order to meet the rapidly changing fashion and growing quality requirements:

- unsurpassed yarn quality
- suited for all fibres and yarn counts
- minimal variation of yarn quality between spinning positions
- reliable spinning processes and excellent quality
- high flexibility in weighting arm settings

With PK 2600 SE series Texparts has developed a weighting arm to meet the requirements of the modern spinning mill.

Types

Mainly used for the spinning of short fibres

| | Drafting system | Top roller diameter D |
|-------------------|------------------|-----------------------|
| PK 2630 SE | 3-roller version | 30 mm |
| PK 2655 SE | 3-roller V-draft | 30 mm |

Mainly used for the spinning of longer staple fibres

| | Drafting system | Top roller diameter D |
|-------------------|------------------|-----------------------|
| PK 2635 SE | 3-roller version | 35 mm |
| PK 2665 SE | 3-roller V-draft | 35 mm |

Texparts components for PK 2630 SE

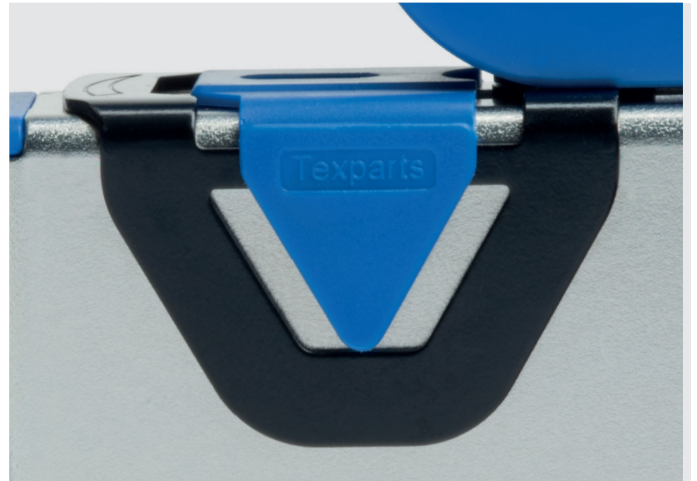
Top apron cradle

| | |
|---------|---|
| OH 2122 | For cotton fibres, synthetics and corresponding blends up to 45 mm fibre length |
| OH 2022 | |
| OH 2132 | |

| | |
|---------|--|
| OH 2142 | For long cotton fibres and synthetics up to 54 mm fibre length |
|---------|--|

Top rollers

| | |
|---------|--|
| LP 1002 | Used as rear and front top roller and apron top roller (optional) |
| LP 1003 | Used as apron top roller (standard) |
| LP 1202 | Used as rear and front top roller and apron top roller (optional) – exclusively for Zinser |
| LP 1203 | Used as apron top roller (standard) – exclusively for Zinser |



EasyFit

Faster and easier fixing of the weighting arm on the support rod without damages. Fitting and adjustment by only one person. As less time is needed, the machine downtime is reduced.

EasySet

Quick and very accurate height setting. EasySet also ensures less variation of yarn quality from spinning position to spinning position.

EasyHandle

Ergonomic handle, optimized for easy handling based on a new lever construction. EasyHandle ensures opening and closing the weighting arm with the use of very little force.

EasyDraft

Independently working single elements with no load variation. Flexible settings of the draft field distances. The drafting system can be adapted easily to fibre properties and ever changing spinning requirements.

EasyIndicate

Enhanced load indication. Due to 5 possible load steps with a maximum load of 200N per element the fibre clamping and guidance is ensured in an optimal way. Variable load adaptation allows high technological flexibility, gentle treatment and reduced wear of related components. EasyIndicate enables an easy reading of the load and prevents false settings. Load settings can be checked even when the weighting arm is closed and is in its working position.



PK 2630 SEH/PK 2630 SEH S series weighting arms

For ring-frames with hexagonal support rods

Minimal Maintenance

The PK 2630 SEH and the PK 2630 SEH S are pure mechanical weighting arms, which hardly require any maintenance at all. The loads are constant throughout the lifetime and do not need re-adjusting. This leads to a constant and uniform load and consequently high consistency in yarn quality.

The PK 2630 SEH weighting elements are applicable for a top roller saddle diameter of 9.5 mm as well as 10.0 mm.

The front weighting element of PK 2630 SEH S is applicable for a top roller saddle diameter of 12 mm.

Both weighting arms can be adapted on the existing hexagonal support rod. In case of conversions, existing good quality top rollers can be used.

Texparts components for PK 2630 SEH/PK 2630 SEH S

Top apron cradle

| | |
|---------|--|
| OH 2122 | For cotton fibres, synthetics and corresponding blends up to |
| OH 2132 | 45 mm fibre length |
| OH 2142 | For long cotton fibres and synthetics up to 54 mm fibre length |

Top rollers

| | |
|---------|-------------------|
| LP 1002 | for PK 2630 SEH |
| LP 1003 | for PK 2630 SEH |
| LP 1202 | for PK 2630 SEH S |
| LP 1203 | for PK 2630 SEH S |



Compact adaptations

Compact systems in the market can be retrofitted to the well established weighting arms PK 2630 SE and PK 2630 SEH/PK 2630 SEH S.

Advanced versatility

One advantage is that the front roller load can be set fully independently from the nip roller load. Consequently there is no interference between nip and front top roller. The front roller is fully seated in the guide arm and ensures best alignment to the specific requirement of the processed material.

Advantages of easy adaption

To adapt the compact systems to the weighting arms only the upper shell of the compact system has to be exchanged with our redesigned shell. The retrofitting is working for 4 cylinder compact systems with positive driven bottom rollers as well as for compact systems for weighting arms with hexagonal support rod.



PK 2000 Plus series weighting arms

The standard drafting system with a Plus

The PK 2000 Plus can be applied on three-roller double-apron drafting systems on short staple ring spinning machines. They are suitable for spinning pure cotton, man-made fibres or blends of both types.

PK 2000 Plus advantages:

- Resistant surface due to special powder coating
- Top apron cradle concept with individual tensioning system
- Individual load adjustment



Types

Mainly used for the spinning of short fibres

| | Drafting system | Top roller diameter D |
|---------------------|-------------------|-----------------------|
| PK 2025 Plus | 3-roller standard | 28 mm |
| PK 2055 Plus | 3-roller V-draft | 28 mm |

Mainly used for the spinning of longer fibres

| | Drafting system | Top roller diameter D |
|---------------------|-------------------|-----------------------|
| PK 2035 Plus | 3-roller standard | 35 mm |

Texparts components for PK 2000 Plus series

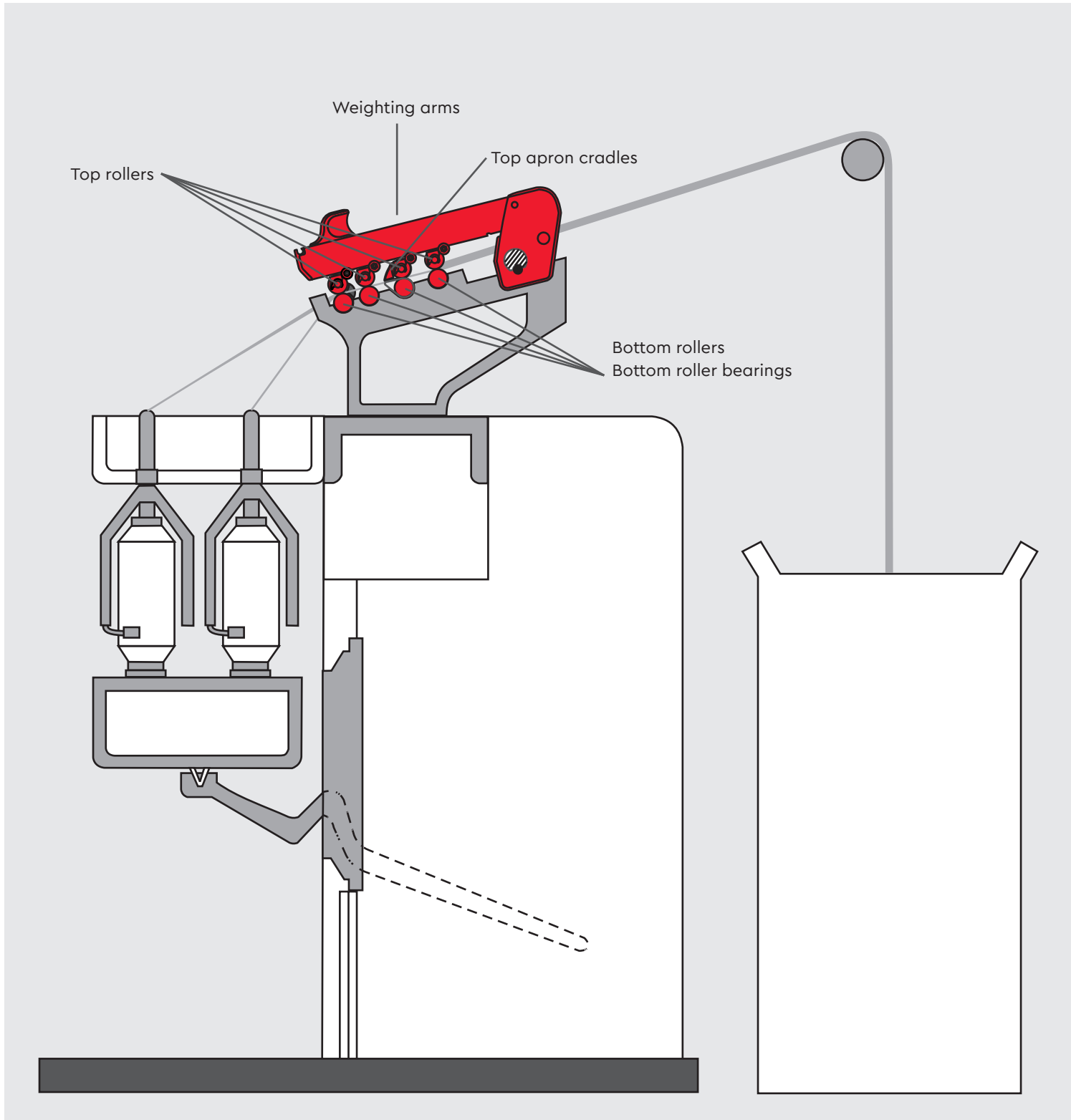
Top apron cradle

| | |
|---------|---|
| OH 2022 | For cotton fibres, synthetics and corresponding blends up to 45 mm fibre length |
| OH 2042 | For long cotton fibres and synthetics up to 54 mm fibre length |

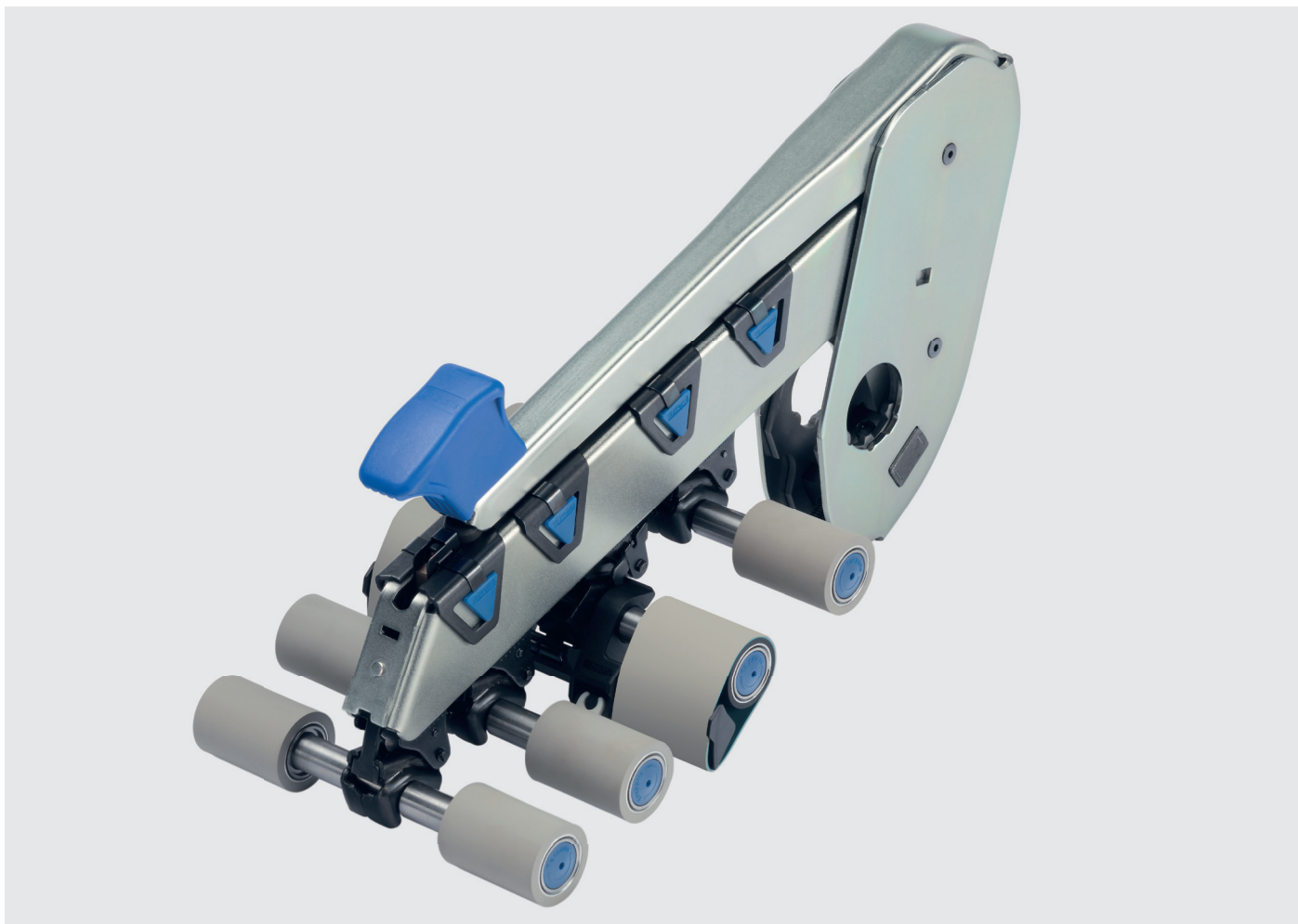
Top rollers

| |
|---------|
| LP 1002 |
| LP 1003 |

Drafting systems for roving frames



- **Flexibility for all fibres**
- **Highest process reliability**
- **Rovings of optimum quality**
- **Versatile portfolio**
 - **Pneumatic and mechanical weighting arms**
 - **3- and 4-roller versions**



PK 1550 mechanical weighting arms

Increased efficiency for the production of high quality rovings

The spring loaded weighting arms PK 1550 offer more flexibility for the spinning process and an improved process reliability, thus resulting in rovings of optimum quality. The PK 1550 weighting arms are intended for 3-roller and 4-roller drafting systems. They are suitable for spinning cotton, man-made fibres or blends thereof.

PK 1550 advantages:

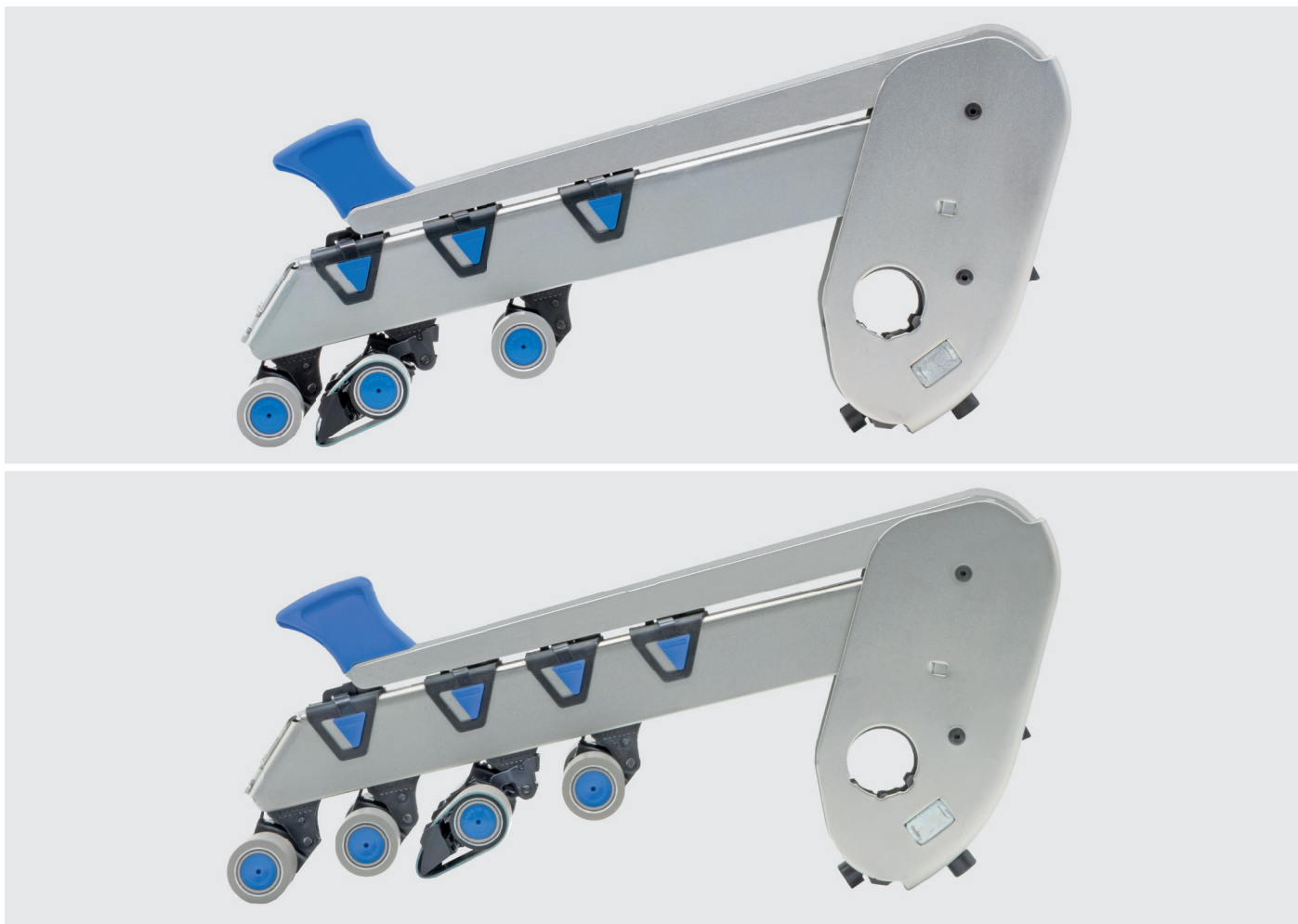
- Optimised surface protection for long life
- Smaller load tolerances
- Visible load indicators
- Ergonomic handle
- Top apron cradle concept with individual tensioning system
- Easy disassembly of top rollers

Types

| | Drafting system | Top roller diameter D |
|---------|------------------|-----------------------|
| | 3-roller version | 28 mm |
| PK 1550 | 3-roller version | 35 mm |
| | 4-roller version | 28 mm |

Texparts components for PK 1550

| Top apron cradle | |
|------------------|--|
| OH 5022 | For cotton and synthetic fibres up to approx. 45 mm fibre length |
| OH 5042 | For long cotton fibres and synthetics up to 54 mm fibre length |
| Top rollers | |
| LP 1015 | |
| LP 1215 | |



PK 1555 mechanical weighting arms

The simplicity of changing the drafting system on roving frames

On roving frames with pneumatic drafting systems, leaks in the hose systems may occur over time. Thus the spinning results can be falsified, which means that you will have to reconstruct the machine. The consequences are machine downtimes and costs for a complete machine conversion or even a new machine.

With the new PK 1555 weighting arms the replacement of the pneumatic drafting system by a mechanical system is now easy to implement. Pneumatic weighting arms PK 5000 can easily be replaced on all different machine types from well-known manufacturers: In addition to the weighting arms only the support rod has to be exchanged. Thus you will receive a roving frame producing consistently high roving quality over the entire machine.

The PK 1555 is available as 3 and 4 roller version.

PK 1555 advantages:

- Easy to implement
- Reduction of conversion costs
- PK 5000 setting tools can still be reused
- Easy conversion and setting
- Simple height adjustment
- Centralised and infinite load setting
- Practical and safe partial load
- Reduction of operating effort

Types

| | Drafting system | Top roller diameter D |
|---------|------------------|-----------------------|
| PK 1555 | 3-roller version | 28 mm |
| | 4-roller version | 28 mm |

Texparts components for PK 1555

| Top apron cradle | | |
|------------------|-----------------------|--|
| OH 5022 | Gauge 90, 100, 110 mm | For cotton and synthetic fibres up to approx. 45 mm fibre length |
| OH 5042 | Gauge 110 mm | For long cotton fibres and synthetics up to 54 mm fibre length |
| Top rollers | | |
| LP 1015 | | |
| LP 1215 | | |

The quality of the top rollers used is of vital importance for the quality of the roving. The smooth running of the top roller with its direct contact to the roving influences the drafting result and as a consequence the yarn quality achieved. In drafting systems for roving frames Texparts top rollers LP 1000 series are used as rear and front top rollers as well as apron top rollers. Texparts top apron cradles OH 5022 and OH 5042 with individual apron tensioning concept offer decisive advantages compared to other types. Perfect fibre guidance throughout the entire roving frame will be achieved.



PK 1580 mechanical weighting arms

Top performance and optimum roving quality

The weighting arms of the PK 1580 series offer top performance and stand for optimum roving quality. They are mainly intended for 3- and 4-roller double apron drafting systems and are suitable for spinning cotton, man-made fibres or blends thereof.

PK 1580 advantages:

- Reduced number of roving breakages (improved process reliability)
- Increased efficiency
- Greater package density of roving bobbin thanks to the more compact roving
- Optimised surface protection for long life
- Smaller load tolerances
- Visible load indicators
- Ergonomic handle
- Top apron cradle concept with individual tensioning system
- Easy disassembly of top rollers

Types

| | Drafting system | Top roller diameter D |
|---------|------------------|-----------------------|
| | 3-roller version | 28 mm |
| PK 1580 | 3-roller version | 35 mm |
| | 4-roller version | 28 mm |

Texparts components for PK 1580

| Top apron cradle | |
|------------------|--|
| OH 5022 | For cotton and synthetic fibres up to approx. 45 mm fibre length |
| OH 5042 | For long cotton fibres and synthetics up to 54 mm fibre length |
| Top rollers | |
| LP 1015 | |
| LP 1215 | |



PK 5000 pneumatic weighting arms

The PK 5000 series weighting arms are an innovative and proven drafting system for short staple roving frames. It can be used for spinning of cotton, man-made fibres and combinations of these. The load on the top rollers is adjusted infinitely and centrally using a compressed air supply system. This ensures a constant load at all spinning positions of the roving frame. The PK 5000 weighting arm offers an extremely practical method of centralised partial load, which is easy to set and persuasively simple to operate.

PK 5000 advantages:

- Simple and easy to operate
- Rapid erection and setting
- Simple height adjustment
- Centralised and infinite load setting
- Practical and safe partial load
- Reduction in the operating forces

Types

Mainly used for the spinning of short fibres

| | Drafting system | Top roller diameter D |
|---------|------------------|-----------------------|
| PK 5025 | 3-roller version | 28 mm |
| | 4-roller version | 28 mm |

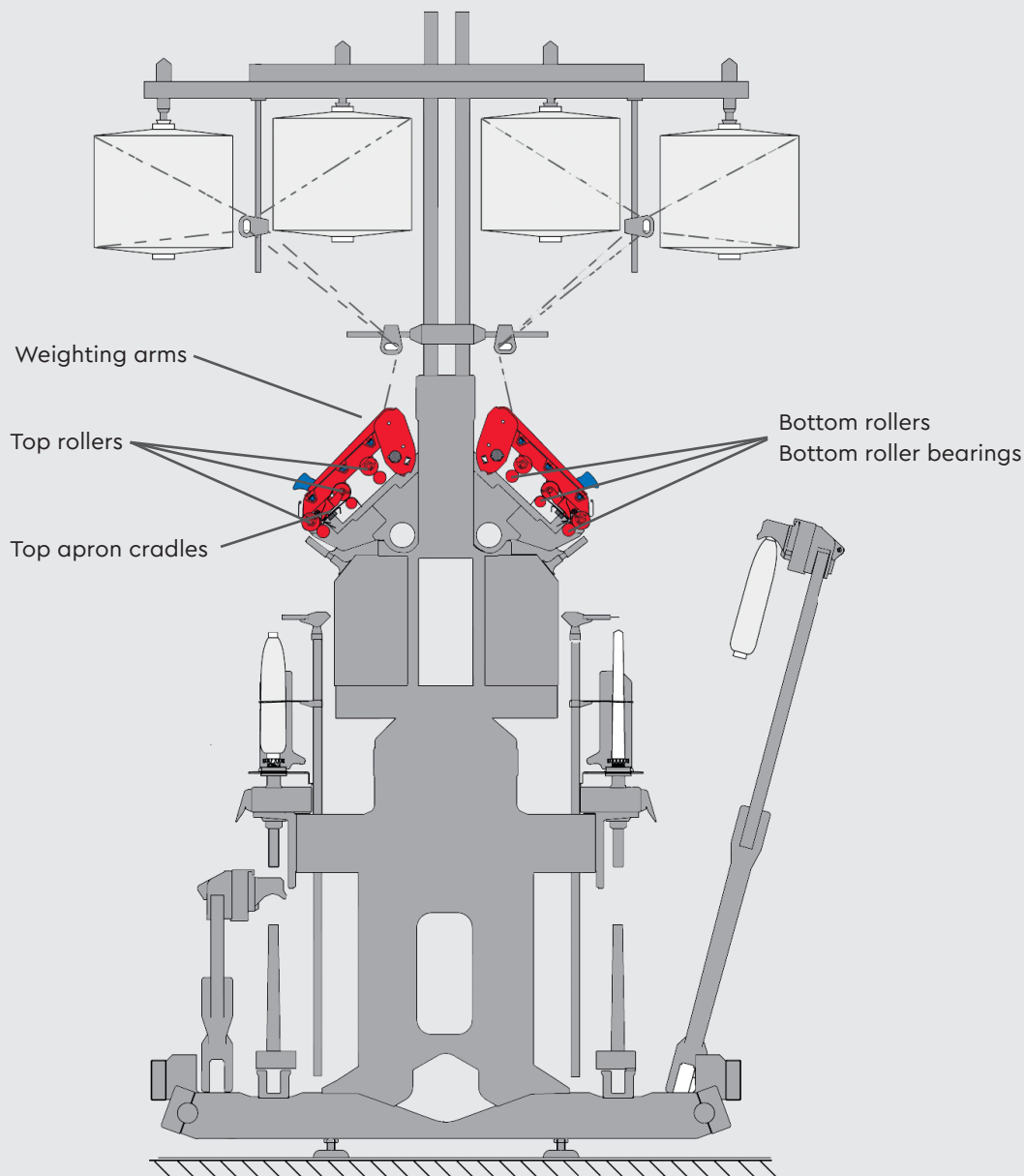
Mainly used for the spinning of longer fibres

| | Drafting system | Top roller diameter D |
|---------|------------------|-----------------------|
| PK 5035 | 3-roller version | 35 mm |
| | 4-roller version | 35 mm |

Texparts components for PK 5000

| Top apron cradle | |
|------------------|--|
| OH 5022 | For cotton and synthetic fibres up to approx. 45 mm fibre length |
| OH 5042 | For long cotton fibres and synthetics up to 54 mm fibre length |
| Top rollers | |
| LP 1015 | |
| LP 1215 | |

Drafting systems for worsted ring frames



- **Weighting arms for all machine types**
- **Pneumatic or mechanical load system**
- **Improved process reliability**
- **Optimum yarn quality**



PK 6000 weighting arms

Excellent quality for long-staple ring spinning machines

The weighting arm PK 6000 is with individual pneumatic loading of the top rollers. It is simple to assemble. Its fasteners are easily accessible. The height can be adjusted and controlled easily and quickly with simple gauges. The draft field setting is referred to the front bottom roller. This means more time for other activities.

Application

The fully pneumatic weighting arm with three-roller double-apron drafting systems on worsted ring spinning machines is suitable for spinning wool, man-made fibres or blends of both types up to 200 mm fibre length. Available gauges: 75 / 82.5 mm

PK 6000 advantages:

- Excellent spinning results
- Constant weighting load from spindle to spindle
- Centralized and infinite setting pressures
- Centralized setting of partial load
- Easy setting
- Easy handling
- Top apron cradle concept with individual tensioning system
- Technical information

Comprehensive safety concept based on three steps:

- 1. Detecting:** Pneumatic unit
- 2. Finding:** The individual flow indicator on the arm permits dependable checking of each arm and rapid location of possible leakage in it
- 3. Rectifying:** Short time required (approx. 1 minute)

Pressure monitoring ensures that the ring spinning machine is protected against a drop in air pressure below the limit of 3 bar.

Texparts components for PK 6000

| Top apron cradle | | |
|--|------------|------------------------------------|
| Ref.-No. | Gauge (mm) | Top roller |
| OH 6022-1254 311 | 75.0 | LP 1014 |
| OH 6022-1254 312 | 82.5 | LP 1015 |
| Rear and front top rollers without cots* | | |
| Ref.-No. | Gauge (mm) | Width of outer ring or sleeve (mm) |
| LP 1014-1253 740 | 75.0 | 34.0 |
| LP 1014-1253 741 | 82.5 | 34.0 |
| Apron top rollers without cots* | | |
| LP 1014-1253 740 | 75.0 | 34.0 |
| LP 1015-1253 744 | 82.5 | 40.0 |

* Cot quality to be determined by the customer himself.



PK 1660 weighting arms

Improved solution for worsted yarn ring spinning

Texparts PK 1600 series weighting arms have long been the industry standard for worsted yarn spinning. In the development of the PK 1660 focus was set on increasing customer benefits in both handling and lifetime. This ensures improved process reliability which results in optimum quality yarn.

Application

PK 1660 weighting arms are mainly intended for 3-roller double-apron drafting systems on worsted ring spinning machines. They are suitable for spinning wool or man-made fibers or blends of both types up to approx. 200 mm length. Available gauges: 75 / 82.5 / 90 / 100 mm

PK 1660 advantages:

- Optimized surface protection
- Smaller load tolerances
- Visible load indicators
- Ergonomic handle

Texparts components for PK 1660

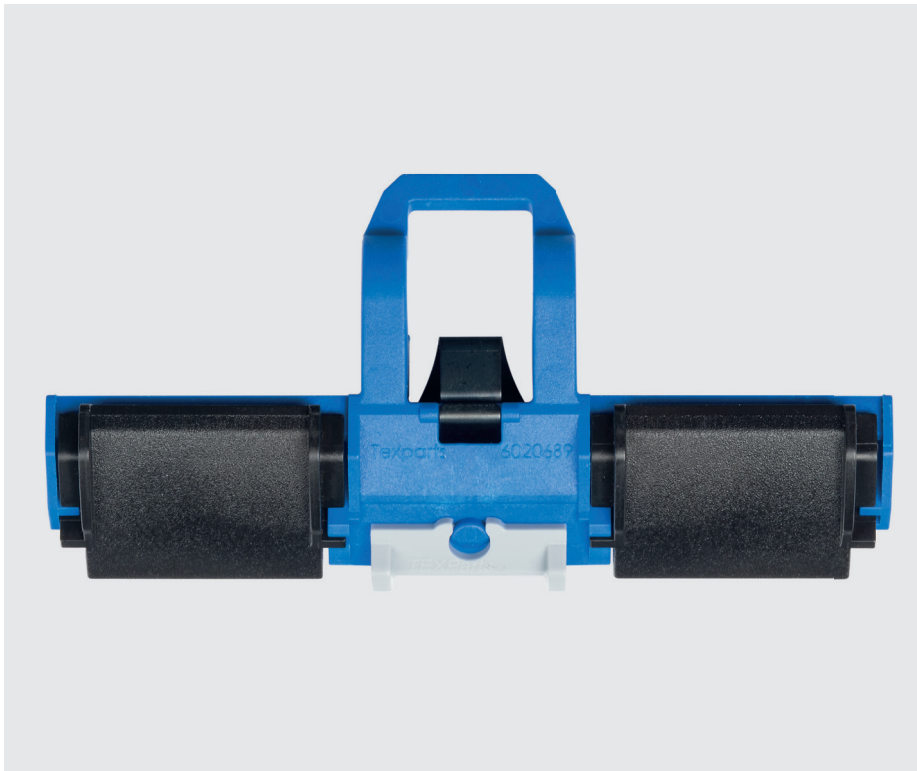
| Top apron cradle | | |
|------------------|------------|------------|
| Ref.-No. | Gauge (mm) | Top roller |
| OH 2402-1253 436 | 75.0 | LP 1016 |
| OH 2402-1253 437 | 82.5 | LP 1017 |

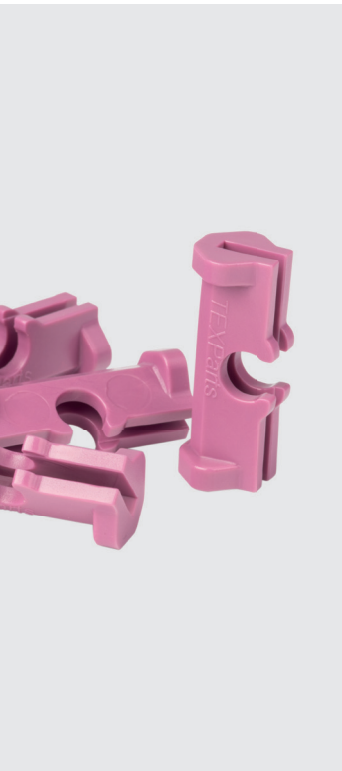
| Rear and front top rollers without cots* | | |
|--|------------|------------------------------------|
| Ref.-No. | Gauge (mm) | Width of outer ring or sleeve (mm) |
| LP 1014-1253 740 | 75.0 | 34.0 |
| LP 1014-1253 741 | 82.5 | 34.0 |
| LP 1014-1253 742 | 90.0 | 34.0 |

| Apron top rollers without cots* | | |
|---------------------------------|------------|------------------------------------|
| Ref.-No. | Gauge (mm) | Width of outer ring or sleeve (mm) |
| LP 1016-1253 711 | 75.0 | 34.0 |
| LP 1017-1256 712 | 82.5 | 40.0 |

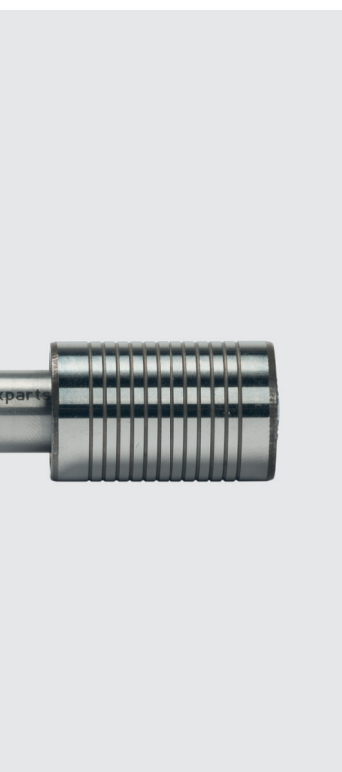
* Cot quality to be determined by the customer himself.

Texparts components for drafting systems





- **All yarn quality determining components from one hand**
- **Covering the whole spinning process**
- **Market and innovation leadership in spinning components**
- **Components for all standard fibre lengths**





Top rollers

Top roller quality is of major importance for spinning quality yarn. The smooth running of the top roller in the direct contact with the roving influences the drafting result and herewith the quality.

Texparts top rollers are fitted with antifriction bearings. This brings advantage for all spinning processes (roving, ring spinning, compact spinning and worsted spinning). A wide range of top roller versions and gauges offers the ideal fit for every individual application. The top rollers are supplied without cot as a standard. All basic types can be delivered with ready ground cots according to customers specification for all types of rubber quality and dimensions.

Advantages:

- Long service life at high load capacity due to optimized bearing seal
- Silent and smooth running performance
- Minimized friction
- Long service intervals
- Simple maintenance

Top rollers for roving frames

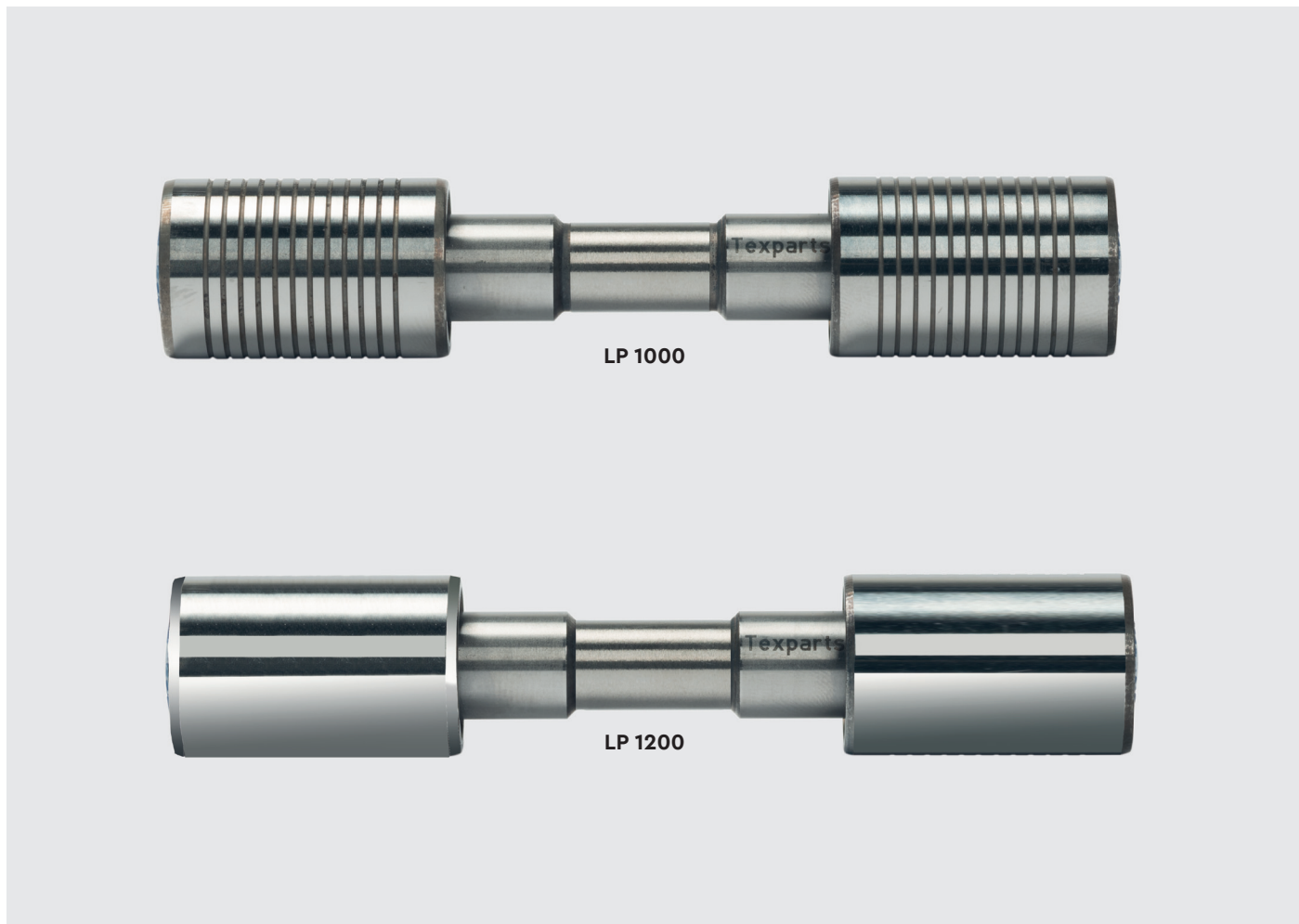
The top roller series LP 1015 and LP 1215 are suitable for roving frames. The spun material determines the used cots.

The following gauges are available:

| Gauge in mm | | | | |
|-------------|------|-------|-------|-------|
| 82.5 | 90.0 | 100.0 | 110.0 | 130.0 |

Top rollers for pre-spinning

| Top roller | Weighting arm | | |
|---------------------|---------------|--------------------|---------|
| | PK 5000 | PK 1550/ PK1580 | PK 1500 |
| LP 1015/ LP 1215 | ● | ● | ● |
| LP 1016 | | | ● |
| LP 1017 | | | ● |



Top rollers for short staple ring frames

Based on the applied weighting arm, top rollers LP 1200 or LP 1000 are used as rear and front top rollers. The spun material determines the specification cots. LP 1203 and LP 1003 are developed for top apron rollers. Depending on the application, LP 1200 or LP 1000 (with cots) are also suitable for top apron rollers. The following gauges are available:

| Gauge in mm | | | | |
|-------------|------|------|------|------|
| 68.4 | 70.0 | 75.0 | 82.5 | 90.0 |

Top rollers for short staple ring spinning

| Top roller | Weighting arm | | | | | Rieter drafting system |
|---------------------|---------------|---------|------------|-------------|---------|------------------------|
| | PK 2000 | PK 2100 | PK 2630 SE | PK 2630 SEH | PK 3000 | |
| LP 1002/ LP 1202 | ● | ● | ● | ● | ● | |
| LP 1003/ LP 1203 | ● | ● | | | ● | |
| LP 302 | | | | | | ● |

Top rollers for long staple ring spinning

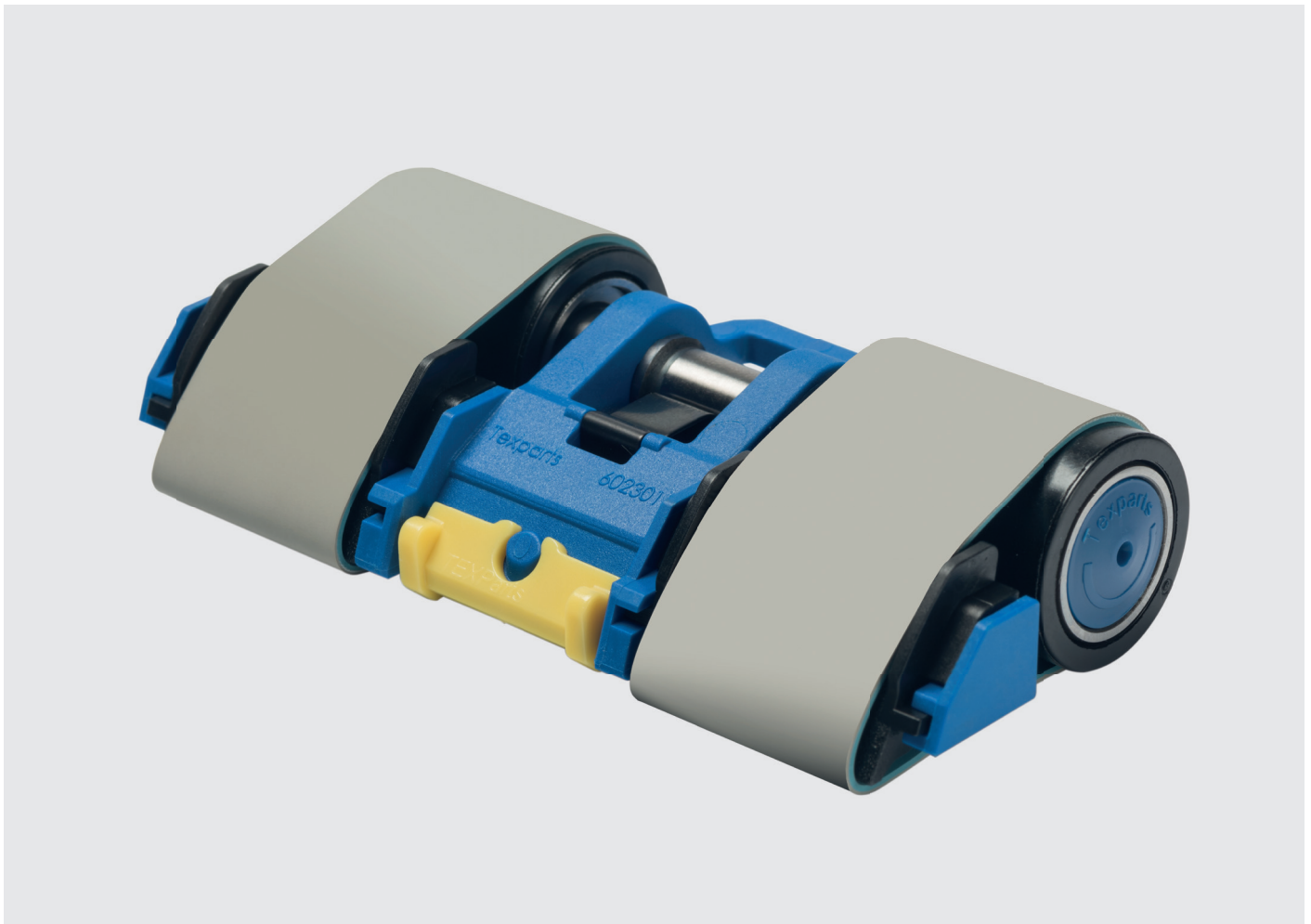
| | PK 6000 | PK 1600 | PK 1601 |
|---------|---------|---------|---------|
| LP 1014 | ● | | ● |
| LP 1016 | ● | ● | |
| LP 1017 | | ● | ● |

Advantages LP 1000 series

- Long service life at high load capacity due to optimised bearing seal
- Long service intervals
- Easy to maintain and to re-lubricate
- Silent and smooth running performance
- Small roller diameters
- Minimised friction
- Fully automatic assembly, steady quality

Advantages of LP 1200 series:

- Maintenance-free due to lifetime lubrication
- Corrosion-free due to chemical nickel-plating
- Increased service life at high load capacity due to improved ball raceway quality
- Silent and smooth running performance
- Small roller diameters
- Minimised friction
- Fully automatic assembly, steady quality

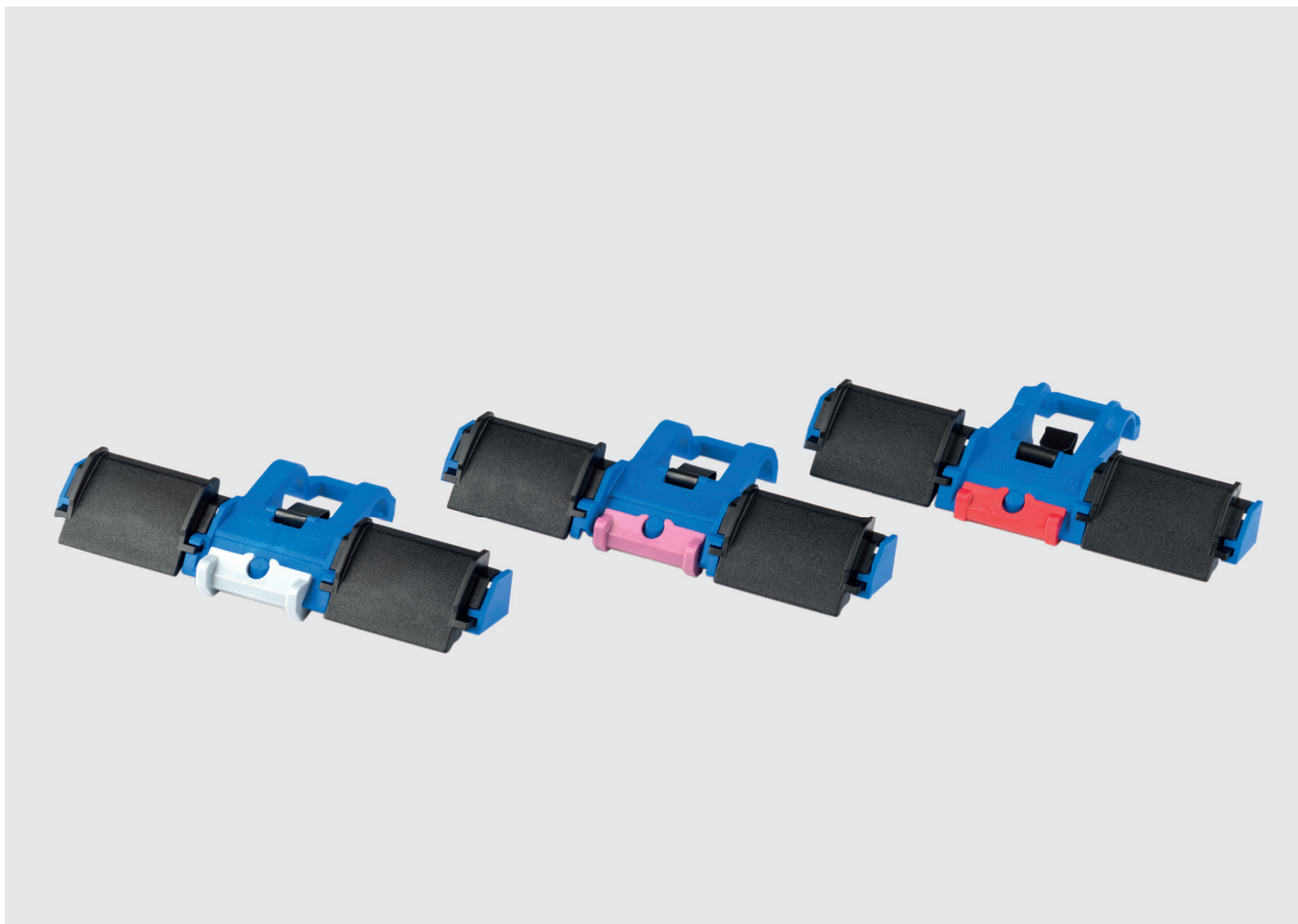


Top apron cradles

In terms of an optimized spinning process Texparts top apron cradles with individual apron tensioning concept offer decisive advantages. They are available for a wide range of fibre types and lengths as well as for every application in short and long staple spinning.

Advantages:

- Low friction and gentle apron running as a result of the special surface structure and an ideal combination of materials
- Ideal parallel positioning of top apron cradle and top roller
- Individual tensioning of aprons per spinning point
- Savings in time of up to 40% due to simple apron exchange without the need to remove the apron unit
- Lowest possible stress on fibres during drafting and gentle fibre guidance



Top apron cradles for roving frames

Top apron cradle

| | |
|----------------|---|
| OH 5022 | For cotton and synthetic fibres up to approx. 45 mm fibre length |
| OH 5042 | For long cotton fibres and synthetics up to 54 mm fibre length |

Distance clips for top apron cradles for roving frames*

| Distance clip | Colour |
|---------------------|--------|
| OLC-0964 104 | White |
| OLC-0964 106 | Black |
| OLC-0964 108 | Green |

* Additional sizes available.

Top apron cradles for short staple ring frames

Top apron cradle

| | |
|----------------|---|
| OH 2022 | For cotton fibres, synthetics and corresponding blends up to 45 mm fibre length |
| OH 2122 | |
| OH 2132 | |
| OH 2042 | For long cotton fibres, synthetics and blends up to 54 mm fibre length |
| OH 2142 | |

Basic distance clips for the specific top apron cradles*

| | Distance clip | Colour |
|----------------|---------------|-------------|
| | OLC-0964 118 | Yellow |
| OH 2022 | OLC-0017 705 | Lilac |
| | OLC-0964 119 | White |
| | OLC-0017 627 | Grey |
| OH 2122 | OLC-0017 705 | Lilac |
| | OLC-0964 119 | White |
| | OLC-0017 705 | Lilac |
| OH 2132 | OLC-0964 119 | White |
| | OLC-6006 661 | Light Green |
| | OLC-0964 117 | Red |
| OH 2042 | OLC-0964 118 | Yellow |
| | OLC-0964 119 | White |
| | OLC-0964 117 | Red |
| OH 2142 | OLC-0964 118 | Yellow |
| | OLC-0964 119 | White |

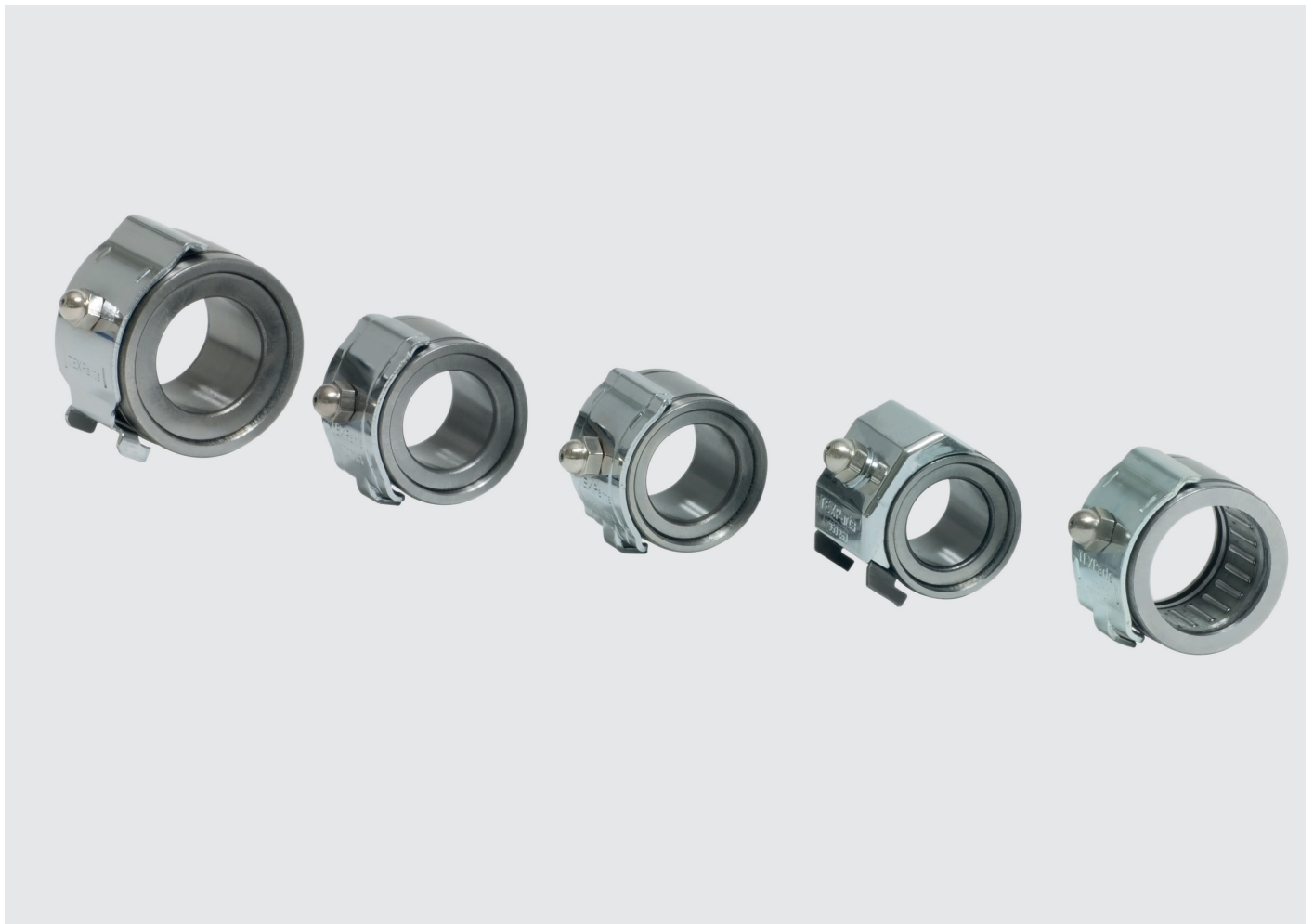
* Additional sizes available.



Bottom rollers

The used raw material and the precision in manufacturing guarantee the bottom rollers quality. Texparts supplies hard-chrome plated bottom rollers for ring spinning machines and roving frames with extremely narrow tolerances.

Bottom rollers play a major role in ensuring yarn quality. Precise concentricity guarantees high yarn quality (evenness and strength). Equally influential to yarn breaks are the running conditions of the bottom rollers. Precise running bottom rollers allow to extend the spinning limits into finer yarn count ranges.



Bottom roller bearings




The precise needle bearings for cotton and worsted ring spinning machines, roving frames, draw frames and air-jet spinning machines are renowned for their high load-bearing capacity.

Advantages:



- Absolutely quiet and precise running behaviour
 - Optimum yarn evenness due to flawless flutes
 - Extension of spinning limits into finer counts
- High load bearing capacity
- Smooth and jolt free start-up
 - No yarn quality drop during start-up phase
- Dependable sealing of bearing against fibre fly and dirt
 - Longer bearing life time

Complete drafting systems overview




Short staple ring frame




| Weighting arm | PK 2630 SE Series | PK 2630 SEH/PK 2630 SEH S | PK 2000 Plus Series |
|----------------------------------|--|---|--|
| |  |  |  |
| Top apron cradle | OH 2122 OH 2022 OH 2132 OH 2142 | OH 2122 OH 2132 OH 2142 | OH 2022 (in gg 68.4, 75 and 82.5 mm) OH 2042 (in gg 68.4 and 75 mm) |
| Front and rear top roller | LP 1002 LP 1202 | LP 1002 (PK 2630 SEH) LP 1202 (PK 2630 SEH S) | LP 1002 |
| Apron top roller | LP 1003 LP 1203 | LP 1003 (PK 2630 SEH) LP 1203 (PK 2630 SEH S) | LP 1003 |
| Available gauges | 70, 75 mm | 70, 75 mm | 68.4, 75, 82.5, 90 mm |

Worsted ring frame

| Weighting arm | PK 6000 | PK 1660 |
|----------------------------------|---|--|
| |  |  |
| Top apron cradle | OH 6022 | OH 2402 |
| Front and rear top roller | LP 1014 | LP 1014 (in gg. 75, 82.5, 90 mm) |
| Apron top roller | LP 1014 (for gg. 75 mm) LP 1015 (for gg. 82.5 mm) | LP 1016 (for gg. 75 mm) LP 1017 (for gg 82.5 mm) |
| Available gauges | 75, 82.5 mm | 75, 82.5, 90 mm |

Roving frame

| Weighting arm | PK 1550 | PK 1555 (3-roller version) | PK 1555 (4-roller version) |
|----------------------------------|--|---|--|
| |  |  |  |
| Top apron cradle | OH 5022 OH 5042 (only in gg 110 mm) | OH 5022 OH 5042 (only in gg 110 mm) | OH 5022 OH 5042 (only in gg 110 mm) |
| Front and rear top roller | LP 1015 LP 1215 (only in gg 110 mm) | LP 1015 LP 1215 (only in gg 110 mm) | LP 1015 LP 1215 (only in gg 110 mm) |
| Apron top roller | LP 1015 LP 1215 (only in gg 110 mm) | LP 1015 LP 1215 (only in gg 110 mm) | LP 1015 LP 1215 (only in gg 110 mm) |
| Available gauge | 90, 100, 110 mm | 90, 100, 110 mm | 90, 100, 110 mm |

| Weighting arm | PK 1580 (3- and 4-roller version) | PK 5000 (3-roller version) | PK 5000 (4-roller version) |
|----------------------------------|---|--|---|
| |  |  |  |
| Top apron cradle | OH 5022 OH 5042 (only 3-roller version gg. 110 mm) | OH 5022 OH 5042 (only in gg. 110 mm) | OH 5022 OH 5042 (only in gg 110 mm) |
| Front and rear top roller | LP 1015 LP 1215 (only in gg. 110 mm) | LP 1015 LP 1215 (only in gg. 110 mm) | LP 1015 LP 1215 (only in gg 110 mm) |
| Apron top roller | LP 1015 LP 1215 (only in gg. 110 mm) | LP 1015 LP 1215 (only in gg. 110 mm) | LP 1015 LP 1215 (only in gg 110 mm) |
| Available gauge | 90, 100, 110 mm | 90, 100, 110 mm | 90, 100, 110 mm |



Stay informed
with our newsletter

Saurer Spinning Solutions GmbH & Co. KG
Location Fellbach
Maria-Merian-Str. 8
70736 Fellbach
Germany
T +49 711 58521 0
info.texparts@saurer.com
saurer.com

Saurer Textile Solutions Pvt Ltd.
105 Mettupalayam Road
Thudiyallur
Coimbatore 641 034
India
T +91 422 3074000
M +91 93441 93444
info@saurer.com
saurer.com

Saurer (Jiangsu) Textile Machinery Co. Ltd.
No. 9 Chang Yang Street
Suzhou Industrial Park
215024 Suzhou
Jiangsu Province
P. R. China
T +86 512 8188 5688
info@saurer.com
saurer.com